

South Texas College



Budget

For Fiscal Year 2012-2013



South Texas College Budget

Fiscal Year 2012-2013



Hidalgo County and Starr County, Texas

**South Texas College
Budget
For The Fiscal Year Ending August 31, 2013**

TABLE OF CONTENTS

INTRODUCTORY SECTION

Board of Trustees	1-3
Executive Staff.....	4
Comprehensive Mission: Vision, Purpose, Core Values, Guiding Principles & Strategic Directions	5
Fact Sheet 2012-2013	6
Programs of Study 2012-2013	7
Summary of Fall Semester Headcount, Unduplicated Annual Headcount and Annual Full Time Equivalent (FTE).....	8
Summary of Revenues and Transfers and Expenditures, Transfers and Contingencies by Fund - Current and Plant Funds	9

UNRESTRICTED FUND REVENUES

Revenues by Source - Pie Chart.....	12
Revenues by Source - Comparison of Previous Fiscal Year with Fiscal Year Ending August 31, 2013 - Pie Chart	13
Summary of Revenues - Budget and Actual - Comparison of Previous Fiscal Years with Fiscal Year Ending August 31, 2013	14

UNRESTRICTED FUND EXPENDITURES

Expenditures by Function (Without Transfers and Contingencies) - Pie Chart.....	16
Expenditures by Function - Comparison of Previous Fiscal Year with Fiscal Year Ending August 31, 2013 - Pie Chart	17
Expenditures by Classification - Pie Chart	18
Expenditures by Classification - Comparison of Previous Fiscal Year with Fiscal Year Ending August 31, 2013 - Pie Chart	19
Summary of Expenditures by Function and Classification.....	20-21

UNRESTRICTED FUND CAPITAL EXPENDITURES

Summary of Capital Expenditures by Function and Organization	23
--	----

AUXILIARY FUND

Summary of Revenues, Expenditures and Transfers - Budget and Actual - Comparison of Previous Fiscal Years with Fiscal Year Ending August 31, 2013	25
--	----

**South Texas College
Budget
For The Fiscal Year Ending August 31, 2013**

**TABLE OF CONTENTS
(Continued)**

RESTRICTED FUND

Summary of Revenues, Expenditures and Transfers - Budget and Actual - Comparison of Previous
Fiscal Years with Fiscal Year Ending August 31, 2013 27

PLANT FUNDS

Summary of Revenues, Expenditures and Transfers 29

RESOLUTION

Resolution Adopting the Budget of South Texas College for the Fiscal Year 2012-2013 31-32

South Texas College
Budget
For the Fiscal Year Ending August 31, 2013

Board of Trustees

ROSE BENAVIDEZ
CHAIR



President of Starr County Industrial Foundation
District 1
Representing Starr County
First Term: Nov. 2009 – May 2012
Second Term: May 2012 – May 2018
Serves as a member of the Facilities Committee

ROY DE LEON
VICE CHAIR



Vice President of Compass Bank – McAllen
District 7
Representing North East Hidalgo County, North Weslaco, Edcouch-Elsa, La Villa, North Mercedes, Northeast Alamo, Northeast Edinburg and Hargill
(Appointed 1997-1998)
First Term: May 1998 – May 2002
Second Term: May 2002 – May 2008
Third Term: May 2008 – May 2014
Serves as Chair of the Finance & Human Resources Committee
Formerly served as Chair of the Board and as a member of the Facilities Committee

GRACIELA FARIAS
SECRETARY



District 2
Representing La Joya, Western Mission, Palmview, Sullivan City, Penitas and Western Alton
First Term: May 2012 – May 2018

South Texas College
Budget
For the Fiscal Year Ending August 31, 2013

Board of Trustees

PAUL R. RODRIGUEZ
MEMBER



CEO of Valley Land Title Co.
District 3
Representing South McAllen, Southwest Pharr, Hidalgo,
Sharyland, Southeast Mission and Granjeno
First Term: August 2012 – May 2016

GARY GURWITZ
MEMBER



Managing Partner, Atlas, Hall & Rodriguez, L.L.P., McAllen
District 4
Representing North McAllen, Northwest Pharr, Palmhurst, Northeast Mission
and Southwest Edinburg (Appointed 1993-1998)
First Term: May 1998 – May 2004
Second Term: May 2004 – May 2010
Third Term: May 2010 – May 2016
Serves as Chair of the Facilities Committee and is a member of the Finance &
Human Resources Committee and the Education and Workforce Innovation
Committee
Formerly served as Chair, Vice Chair, and Secretary of the Board

South Texas College
Budget
For the Fiscal Year Ending August 31, 2013

Board of Trustees

DR. ALEJO SALINAS, JR.
MEMBER



Clinical Lecturer, University of Texas-Pan American
Retired Superintendent/Superintendent Emeritus, Hidalgo ISD
District 5
Representing North West Hidalgo County, Edinburg, North San Juan and
Northeast Pharr
First Term: May 1996 – May 2002
Second Term: May 2002 – May 2008
Third Term: May 2008 – May 2014
Serves as a member of the Education and Workforce Innovation Committee
and the Finance and Human Resources Committee
Formerly served a member of the Facilities Committee

JESSE VILLARREAL
MEMBER



Parental Involvement Department, Weslaco ISD
District 6
Representing Donna, South Alamo, South San Juan, South East Pharr, South
Weslaco and Progreso
First Term: May 2000 – May 2006
Second Term: May 2006 – May 2012
Third Term: May 2012 – May 2018
Serves as a member of the Facilities Committee
Formerly served as Secretary and Vice Chair of the Board

South Texas College
Budget
For The Fiscal Year Ending August 31, 2013

Executive Staff

NAME	POSITION
Dr. Shirley A. Reed, MBA, Ed. D.	President
Juan E. Mejia	Vice President for Academic Affairs
Vacant	Vice President for Student Affairs and Enrollment Management
Jose Cruz, Jr.	Vice President for Information Services and Planning
Diana A. Peña	Vice President for Financial Services
Wanda F. Garza	Executive Officer for the North American Advanced Manufacturing Research & Education Initiative

The Vision, Purpose, Core Values, Guiding Principles, and Strategic Directions Constitute the **Comprehensive Mission** for South Texas College

VISION A better quality of life for our communities.

PURPOSE South Texas College is a world-class comprehensive institution of higher learning providing premier educational and workforce programs and services in response to the needs of the region.

CORE VALUES

- Student Success
- Learning
- Excellence
- Integrity
- Community
- Opportunity

GUIDING PRINCIPLES

- Be a premier learning-centered higher education institution where student and community success are paramount;
- Serve as the cornerstone for the economic vitality of South Texas;
- Foster an environment for the students and community to achieve a better quality of life;
- Nurture a culture where collaboration is valued and achievement is recognized.

STRATEGIC DIRECTIONS

- South Texas College commits to student learning as the foundation of student success through excellence in teaching and service, faculty and staff empowerment, professional development, and accountability.
- South Texas College proudly provides opportunities to all students with high expectations for their success.
- South Texas College leads the transformation of the region to a “college-going” culture whereby attending and completing higher education is expected for all.
- South Texas College serves as the catalyst for regional economic prosperity and social mobility.
- South Texas College models professionalism through integrity, mutual respect, civility, trust, and collaboration.
- South Texas College champions a culture of excellence based on evidence.

Approved by the Board of Trustees, September 13, 2007.





Locations

Pecan Campus
McAllen, TX

Mid-Valley Campus
Weslaco, TX

Starr County Campus
Rio Grande City, TX

Technology Campus
McAllen, TX

**Dr. Ramiro R. Casso
Nursing & Allied Health
Campus**
McAllen, TX

Executive Staff

Dr. Shirley A. Reed
President

Juan E. Mejia
VP, Academic Affairs

Vacant
*VP, Student Affairs and
Enrollment Management*

Jose Cruz Jr.
*VP, Information Services
and Planning*

Diana A. Pena
VP, Finance

Wanda F. Garza
*Executive Officer for the
North American Advanced
Manufacturing Research &
Education Initiative*

Board of Trustees

Rose Benavidez
Chair

Roy de León
Vice Chair

Graciela Farias
Secretary

Paul R. Rodriguez
Member

Gary Gurwitz
Member

Dr. Alejo Salinas Jr.
Member

Jesse Villarreal
Member

South Texas College Fact Sheet 2012-2013

About South Texas College

Founded in 1993, South Texas College is accredited by the Commission on Colleges of the Southern Association of Colleges and Schools to award baccalaureate and associate degrees. More than 30,000 students attend STC, and a faculty and staff of more than 1,600 serve STC's five state-of-the-art campuses and one virtual campus.

Associate Degrees and Certificates

The college offers more than 100 degree and certificate program options in a variety of liberal art, math, social science, science, technology, nursing and allied health fields of study.

Bachelor of Applied Technology

STC offers Bachelor of Applied Technology degrees in Computer and Information Technologies, Medical and Health Services Management and Technology Management. The college is the only Texas community college accredited to offer three BAT degrees.

Dual Enrollment Opportunities

STC has instituted a variety of dual enrollment programs, including early college high schools, drop-out recovery programs, academies and other unique initiatives with high schools throughout Hidalgo and Starr counties. The programs allow eligible students to take college courses with the opportunity to earn certificates and associate degrees while attending high school. Combined, more than 10,000 students are currently enrolled in these programs.

eSTC Virtual Campus

Through the college's new virtual campus, students not only have access to more than 500 online courses, they can also take advantage of library services, admissions, advising, payment services, financial aid, bookstore and testing. STC also offers 10 online associate degrees options so students never need set foot on an STC campus to earn their degree.

Continuing, Professional and Workforce Education

The program provides opportunities for lifelong learners who want to upgrade their skills, change careers, renew licenses and certifications, or seek personal enrichment. There is a wide variety of course offerings including online classes. Additionally the division also offers customized training to area businesses, industries and the community. Training programs are tailored to a client's specific needs in terms of content, schedule and location.

NAAMREI

The college is the fiscal agent and home of the executive offices for the North American Advanced Manufacturing Research and Education Initiative. STC serves as the Regional Institute for Advanced Manufacturing linked to all community and technical colleges in the region. The college has taken the lead in helping train workers to fuel a regional manufacturing economy and to support innovations in advanced, rapid response manufacturing.

Articulation Agreements

For those students who wish to continue their education beyond an associate's degree, STC has more than 60 articulation agreements in place with colleges across the country.

Vital Statistics

- o More than 70% of student population are the first in their families to attend college
- o More than 95% of students are Hispanic
- o More than 88% of students (not including dual enrollment students) take advantage of some form of financial aid
- o Class size averages 25 students per faculty member

In accordance with the Americans with Disabilities Act of 1990, Title IX of the Education Amendment of 1972, and Section 504 of the Vocational Rehabilitation Act of 1973, STC provides accommodations as required by law to afford equal educational opportunities to all people.

For questions about the accreditation of South Texas College contact the Commission on Colleges at (404) 679-4500.

(956) 872-8311

www.southtexascollege.edu

SOUTH TEXAS COLLEGE
PROGRAMS OF STUDY
2012-2013

CHANGING LIVES, CHANGING COMMUNITIES

For the 2012-2013 academic year STC has 110 degrees and certificates available to its students: 3 Baccalaureate degrees, one Associate of Arts Degree in 18 fields of study, one Associate of Arts in Teaching in 3 fields of study, one Associate of Science Degree in 8 fields of study, 28 Associate of Applied Science Degrees, and 50 Certificates.

BACCALAUREATE DEGREES

- Bachelor of Applied Technology in Computer and Information Technologies
- Bachelor of Applied Technology in Medical and Health Services Management
- Bachelor of Applied Technology in Technology Management

BUSINESS & TECHNOLOGY

ASSOCIATE OF ART DEGREE

Field of Study

- Business Administration-Transfer Plan

ASSOCIATE OF APPLIED SCIENCE DEGREES

- Automotive Technology
 - Specialization:
 - GM-ASEP
- Business Administration
 - Specializations:
 - Accounting
 - Banking
 - Import/Export/Logistics
 - Management
 - Marketing
- Business Computer Systems
 - Specializations:
 - Computer Specialist
 - Networking Specialist
- Computer Aided Drafting and Design Technology
 - Specializations:
 - Architectural Drafting
 - Civil Drafting
 - Design and Technical Graphics
 - Geographic Information Systems
- Construction Supervision
- Culinary Arts
- Diesel Technology
- Electrician Technology
- Electronic and Computer Maintenance Technology
 - Specializations:
 - Computer Maintenance Technology
 - Computer Support Specialist
- Fire Science Technology*
- Heating, Ventilation, Air Conditioning and Refrigeration Technology
- Human Resource Specialist
- Law Enforcement*
- Legal Office Management
- Office Management
- Paralegal
- Precision Manufacturing Technology

CERTIFICATES

- Accounting Clerk
- Architectural Drafting
- Automotive Technology
- Banking
- Basic Firefighter
- Basic Peace Officer*
- Civil Drafting
- Combination Welding
- Commercial Baking
- Commercial Cooking
- Computer and Information Technologies Specialist
- Computer and Internet Specialist
- Computer and Network Specialist
- Computer Applications Specialist
- Computer Maintenance Specialist
- Computer Support Specialist
- Construction Supervision Assistant
- Design and Technical Graphics
- Diesel Technology
- Electrician Assistant
- Ford Youth and Adult Training Program (formerly Maintenance and Light Repair)
- Geographic Information Systems
- Heating, Ventilation, Air Conditioning and Refrigeration Technology
- Human Resource Assistant
- Import/Export
- Information Security Specialist
- Legal Office Specialist
- Logistics
- Management
- Marketing
- Mechatronics
- Multimedia Specialist
- Office Specialist
- Plumber Assistant
- Precision Manufacturing Technology
- Structural Welding
- Telecommunication Technology Specialist

LIBERAL ARTS & SOCIAL SCIENCES

ASSOCIATE OF ARTS DEGREE

Fields of Study

- Anthropology
- Communication
- Criminal Justice
- Drama
- English
- Fine Arts
- Graphic Arts
- History
- Interdisciplinary Studies
- Kinesiology
- Language and Cultural Studies
- Mexican-American Studies
- Philosophy
- Political Science
- Psychology
- Social Work
- Sociology

* Pending approval from the Texas Higher Education Coordinating Board.
 ** This is a two-year certificate.

ASSOCIATE OF ARTS IN TEACHING

Fields of Study

- EC-6 Generalist
- 4-8 Generalist
- Grades 8-12

ASSOCIATE OF APPLIED SCIENCE DEGREES

Fields of Study

- American Sign Language and Interpreter Studies
 - Specializations:
 - Deaf Support Specialist
 - Sign Language Interpreter
- Child Development

CERTIFICATES

- Child Development
 - Specializations:
 - Infant and Toddler
 - Pre-School
- Trilingual Interpreter (Enhanced Skills Certificate)

MATH & SCIENCE

ASSOCIATE OF SCIENCE DEGREE

Fields of Study

- Biology
- Chemistry
- Computer Information Systems
- Computer Science
- Engineering
- Mathematics
- Physics
- Pre-Pharmacy

NURSING & ALLIED HEALTH

ASSOCIATE OF APPLIED SCIENCE DEGREES

- Associate Degree Nursing
 - LVN/ADN Transition
 - Paramedic to RN
- Emergency Medical Technology-Paramedic
- Health Information Technology
- Medical Assistant Technology
- Occupational Therapy Assistant
- Pharmacy Technology
- Physical Therapist Assistant
- Radiologic Technology
- Respiratory Therapy

CERTIFICATES

- Electronic Health Record Specialist
- Emergency Medical Technology-Basic
- Emergency Medical Technology-Intermediate
- Emergency Medical Technology-Paramedic**
- Medical Assistant Technology
- Medical Coding Specialist
- Medical Information/Transcription Specialist
- Medical Office Specialist
- Patient Care Assistant
- Pharmacy Technology
- Vocational Nursing

South Texas College

Summary of Fall Semester Headcount, Unduplicated Annual Headcount and Annual Full Time Equivalent (FTE)

Academic Year	Fall Semester Headcount	Unduplicated Annual Headcount	Annual FTE
1993 - 94	1,055	2,719	1,318
1994 - 95	2,227	4,720	2,221
1995 - 96	3,254	6,893	3,087
1996 - 97	5,416	9,756	4,696
1997 - 98	6,849	11,861	5,737
1998 - 99	9,598	14,391	7,572
1999 - 00	10,364	15,214	7,901
2000 - 01	11,183	16,793	8,343
2001 - 02	12,443	18,357	9,275
2002 - 03	13,691	20,447	10,173
2003 - 04	15,228	21,927	10,529
2004 - 05	17,035	23,847	11,384
2005 - 06	16,233	23,594	11,147
2006 - 07	18,460	25,423	11,675
2007 - 08	19,808	27,940	12,705
2008 - 09	21,666	30,796	14,162
2009 - 10	26,368	36,211	17,918
2010 - 11	28,006	36,871	18,710
2011 - 12	29,513	39,307	19,665
2012 - 13*	31,800		

* Projected

South Texas College
Current & Plant Funds
Summary of Revenues and Transfers and Expenditures,
Transfers and Contingencies by Fund

Budget for Fiscal Year 2012 - 2013

Fund	Revenues and Transfers*	Expenditures, Transfers and Contingencies
Unrestricted Fund	\$ 134,562,226	\$ 134,562,226
Auxiliary Fund	\$ 2,126,501	\$ 2,126,501
Restricted Fund	\$ 79,115,684	\$ 79,115,684
Plant Fund - Unexpended - Construction	\$ 7,183,125	\$ 7,183,125
Plant Fund - Renewals & Replacements	\$ 10,442,564	\$ 10,442,564
Plant Fund - Retirement of Indebtedness	\$ 12,267,403	\$ 12,267,403

* Amounts may include Fund Balance (Carryover).



This page intentionally left blank.

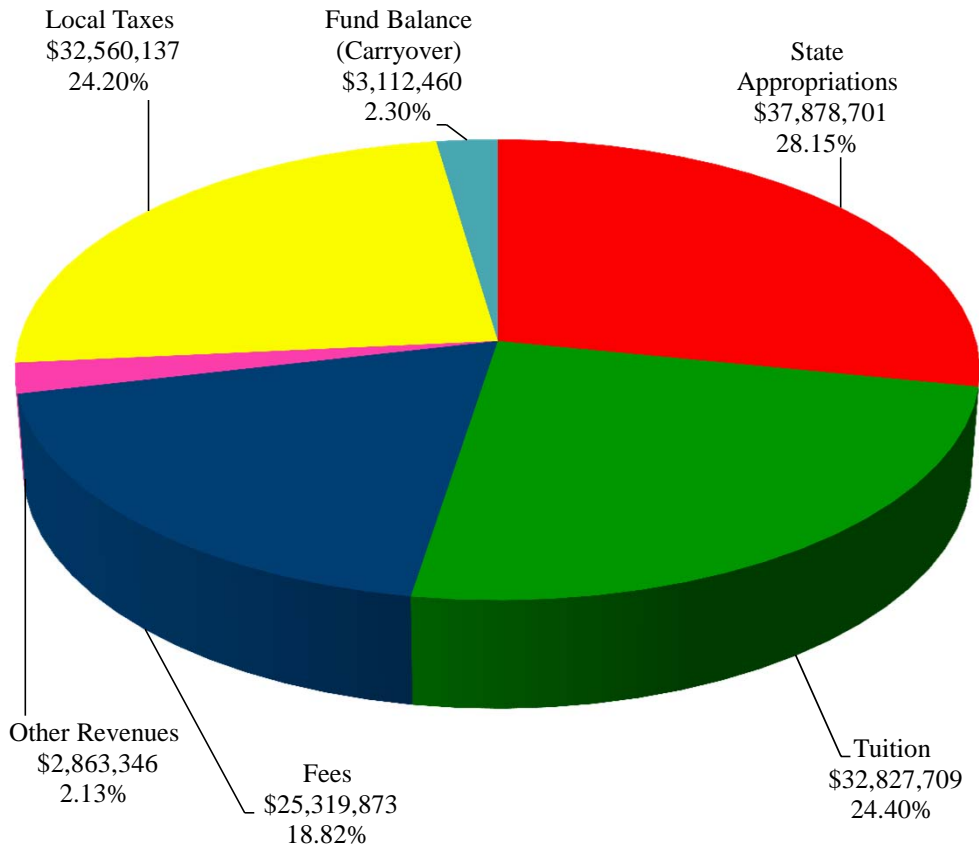


This page intentionally left blank.

South Texas College Unrestricted Fund Revenues by Source

Budget for Fiscal Year 2012 - 2013

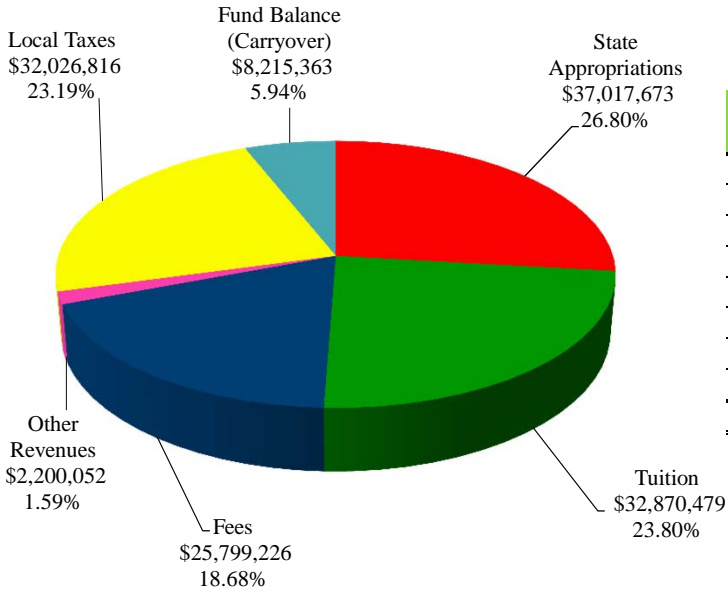
Source of Revenues	FY '13 Budget	Percentage
State Appropriations	\$ 37,878,701	28.15%
Tuition	32,827,709	24.40%
Fees	25,319,873	18.82%
Other Revenues	2,863,346	2.13%
Local Taxes	32,560,137	24.20%
Fund Balance (Carryover)	3,112,460	2.30%
Total Revenues	\$ 134,562,226	100.00%



South Texas College Unrestricted Fund Revenues by Source

Comparison of Previous Fiscal Year with Fiscal Year Ending August 31, 2013

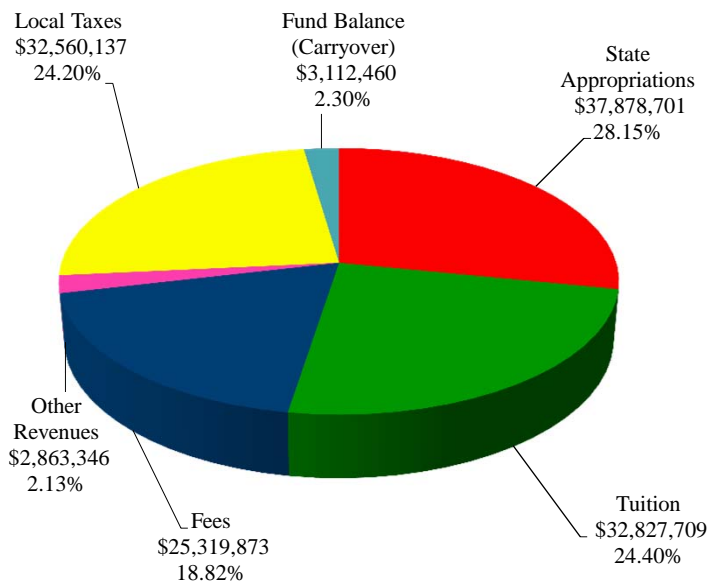
Fiscal Year 2012



Source of Revenues	FY '12 Budget (As Amended)	Percentage
State Appropriations	\$ 37,017,673	26.80%
Tuition	32,870,479	23.80%
Fees	25,799,226	18.68%
Other Revenues	2,200,052	1.59%
Local Taxes	32,026,816	23.19%
Fund Balance (Carryover)	8,215,363	5.94%
Total Revenues	\$ 138,129,609	100.00%

Fiscal Year 2013

Source of Revenues	FY '13 Budget	Percentage
State Appropriations	\$ 37,878,701	28.15%
Tuition	32,827,709	24.40%
Fees	25,319,873	18.82%
Other Revenues	2,863,346	2.13%
Local Taxes	32,560,137	24.20%
Fund Balance (Carryover)	3,112,460	2.30%
Total Revenues	\$ 134,562,226	100.00%



South Texas College
Unrestricted Fund
Summary of Revenues - Budget and Actual

Comparison of Previous Fiscal Years with Fiscal Year Ending August 31, 2013

Revenue Source	FY '11 Budget (As Amended)	FY '11 Actual	FY '12 Budget (As Amended)	FY '12 Estimated*	FY '13 Budget
State Appropriations	\$ 36,294,969	\$ 36,445,088	\$ 37,017,673	\$ 38,385,109	\$ 37,878,701
Tuition	33,055,140	31,415,953	32,870,479	31,791,657	32,827,709
Fees	23,237,356	22,834,456	25,799,226	26,066,805	25,319,873
Other Revenues	2,787,300	2,554,421	2,200,052	2,743,064	2,863,346
Local Taxes	32,800,203	33,798,861	32,026,816	32,026,816	32,560,137
Fund Balance (Carryover)	10,890,787	11,015,787	8,215,363	8,340,363	3,112,460
Total Unrestricted Fund Revenues	\$ 139,065,755	\$ 138,064,566	\$ 138,129,609	\$ 139,353,814	\$ 134,562,226

* Amounts are estimated. Actual amounts will be available after fiscal year end and completion of audit.

The Unrestricted Fund includes those economic resources of the college which are expendable for the purpose of performing the primary missions of the institution-instruction, research, and public service - and which are not restricted by external sources or designated by the governing board of other than operating expenditures.

Note:
State Appropriations Revenues include state on-behalf benefits which are budgeted in the Unrestricted Fund and are subsequently transferred to the Restricted Fund along with related expenditures for Annual Financial Report purposes.

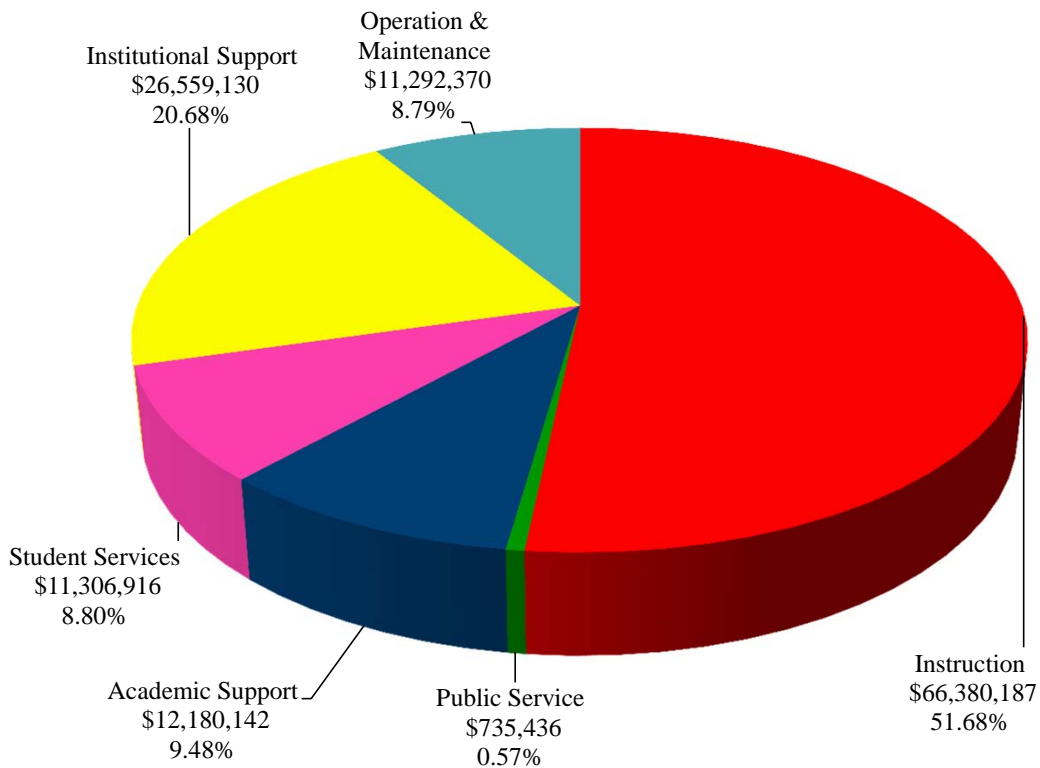


This page intentionally left blank.

**South Texas College
Unrestricted Fund
Expenditures by Function
(Without Transfers and Contingencies)**

Budget for Fiscal Year 2012 - 2013

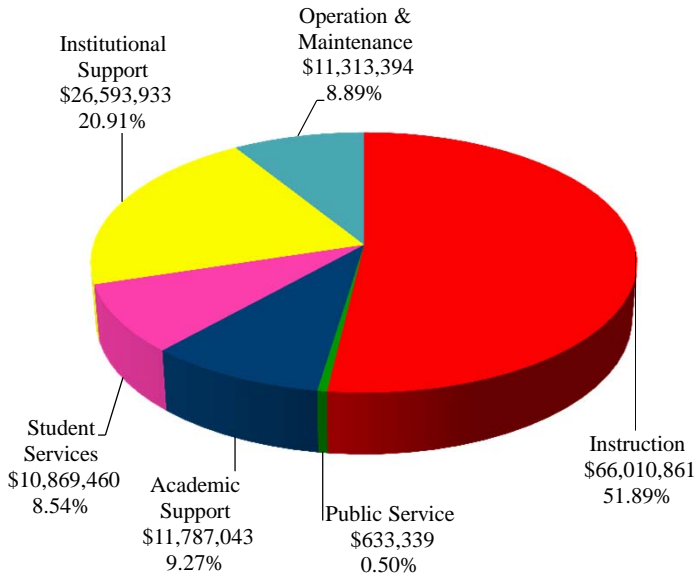
Function	FY '13 Budget	Percentage
Instruction	\$ 66,380,187	51.68%
Public Service	735,436	0.57%
Academic Support	12,180,142	9.48%
Student Services	11,306,916	8.80%
Institutional Support	26,559,130	20.68%
Operation & Maintenance	11,292,370	8.79%
Total Expenditures	\$ 128,454,181	100.00%



South Texas College Unrestricted Fund Expenditures by Function (Without Transfers and Contingencies)

Comparison of Previous Fiscal Year with Fiscal Year Ending August 31, 2013

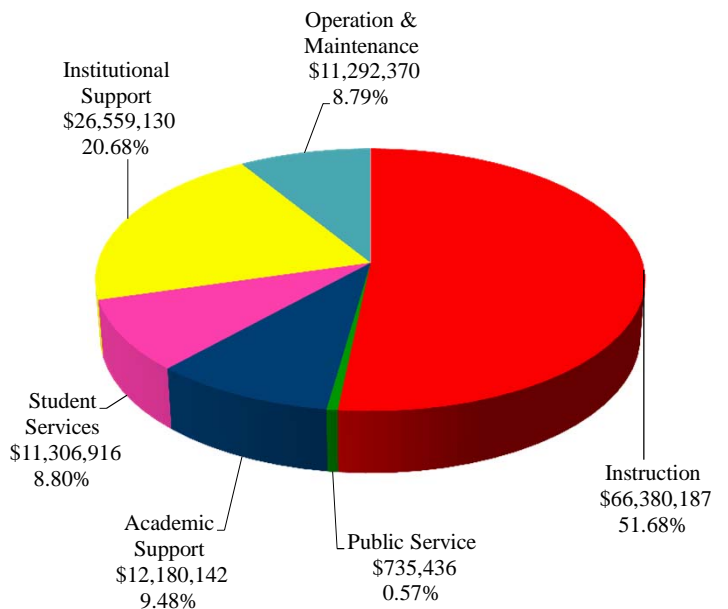
Fiscal Year 2012



Function	FY '12 Budget (As Amended)	Percentage
Instruction	\$ 66,010,861	51.89%
Public Service	633,339	0.50%
Academic Support	11,787,043	9.27%
Student Services	10,869,460	8.54%
Institutional Support	26,593,933	20.91%
Operation & Maintenance	11,313,394	8.89%
Total Expenditures	\$ 127,208,030	100.00%

Fiscal Year 2013

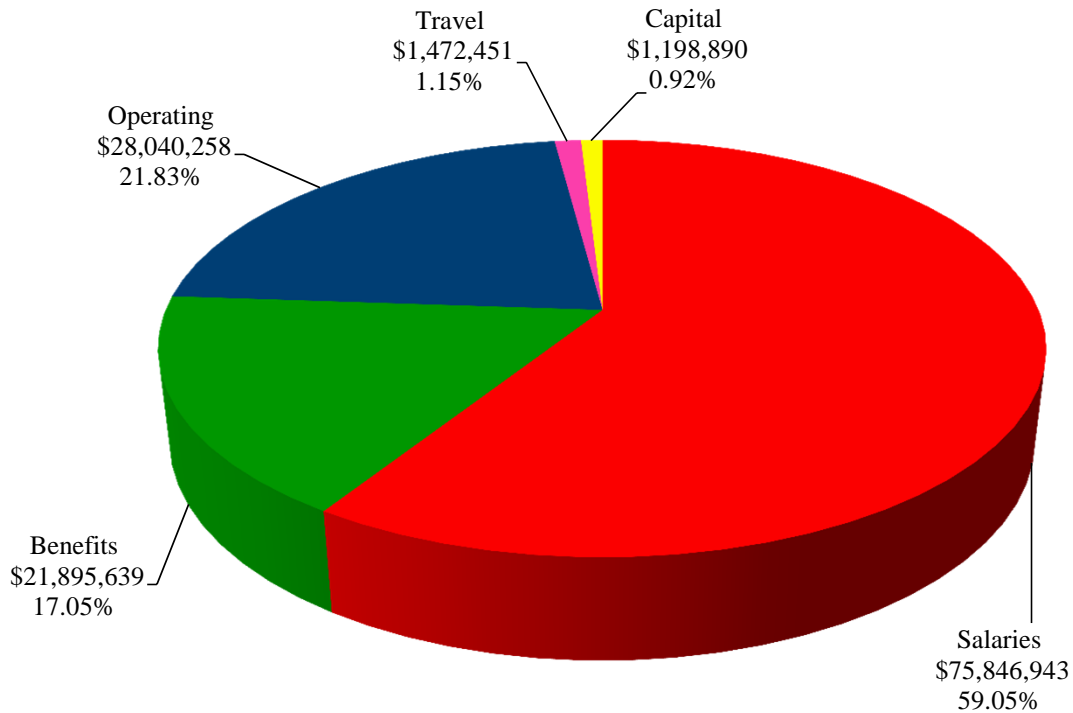
Function	FY '13 Budget	Percentage
Instruction	\$ 66,380,187	51.68%
Public Service	735,436	0.57%
Academic Support	12,180,142	9.48%
Student Services	11,306,916	8.80%
Institutional Support	26,559,130	20.68%
Operation & Maintenance	11,292,370	8.79%
Total Expenditures	\$ 128,454,181	100.00%



South Texas College
Unrestricted Fund
Expenditures by Classification
(Without Transfers and Contingencies)

Budget for Fiscal Year 2012 - 2013

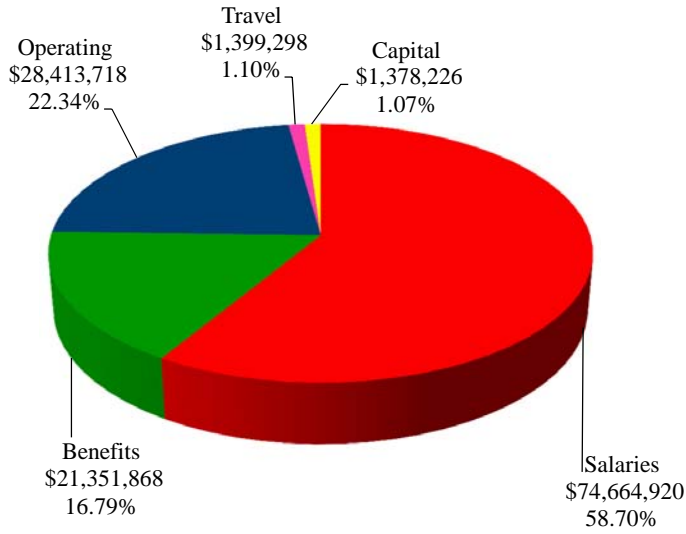
Classification	FY '13 Budget	Percentage
Salaries	\$ 75,846,943	59.05%
Benefits	21,895,639	17.05%
Operating	28,040,258	21.83%
Travel	1,472,451	1.15%
Capital	1,198,890	0.92%
Total Expenditures	\$ 128,454,181	100.00%



South Texas College Unrestricted Fund Expenditures by Classification (Without Transfers and Contingencies)

Comparison of Previous Fiscal Year with Fiscal Year Ending August 31, 2013

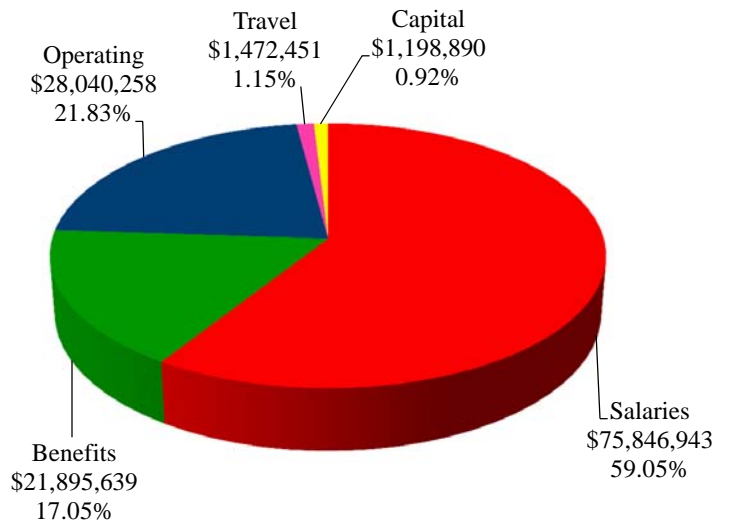
Fiscal Year 2012



Function	FY '12 Budget (As Amended)	Percentage
Salaries	\$ 74,664,920	58.70%
Benefits	21,351,868	16.79%
Operating	28,413,718	22.34%
Travel	1,399,298	1.10%
Capital	1,378,226	1.07%
Total Expenditures	\$ 127,208,030	100.00%

Fiscal Year 2013

Function	FY '13 Budget	Percentage
Salaries	\$ 75,846,943	59.05%
Benefits	21,895,639	17.05%
Operating	28,040,258	21.83%
Travel	1,472,451	1.15%
Capital	1,198,890	0.92%
Total Expenditures	\$ 128,454,181	100.00%



South Texas College
Unrestricted Fund
Summary of Expenditures by Function and Classification
Budget for Fiscal Year 2012-2013

Function / Classification	Salaries	Percent of Total	Benefits	Percent of Total	Operating	Percent of Total
Instruction	\$ 46,002,877	60.65%	\$ 13,259,210	60.56%	\$ 6,146,597	21.92%
Public Service	343,562	0.45%	61,742	0.28%	296,602	1.06%
Academic Support	7,155,271	9.43%	1,909,934	8.72%	2,627,903	9.37%
Student Services	7,182,567	9.47%	2,088,359	9.54%	1,702,100	6.07%
Institutional Support	12,060,668	15.90%	3,595,370	16.42%	10,094,708	36.00%
Operation & Maintenance - Plant	3,101,998	4.10%	981,024	4.48%	7,172,348	25.58%
Total - Without Transfers & Contingencies	75,846,943	100.00%	21,895,639	100.00%	28,040,258	100.00%
Percent of Total Expenditures Without Transfers & Contingencies	59.05%		17.05%		21.83%	
Transfers and Contingencies						
Transfer-Construction Fund	-		-		2,500,000	
Transfer-PPFCO Debt	-		-		-	
Transfer-MTR Bond Series 2007	-		-		394,800	
Transfer-NAAMREI/IAM	-		-		1,013,245	
Contingency	-		-		2,200,000	
Total Transfers and Contingencies	-		-		6,108,045	
Total Unrestricted Budget Expenditures/Transfers/Contingencies	\$ 75,846,943		\$ 21,895,639		\$ 34,148,303	
Percent of Total Expenditures With Transfers & Contingencies	56.37%		16.27%		25.38%	

South Texas College
Unrestricted Fund
Summary of Expenditures by Function and Classification
Budget for Fiscal Year 2012-2013

(Continued)

Travel	Percent of Total	Capital	Percent of Total	Total	Percent of Total Budget W/O Trans/Cont	Percent of Total Budget With Trans/Cont
\$ 706,503	47.98%	\$ 265,000	22.10%	\$ 66,380,187	51.68%	49.33%
33,530	2.28%	-	0.00%	735,436	0.57%	0.55%
241,180	16.38%	245,854	20.51%	12,180,142	9.48%	9.05%
184,548	12.53%	149,342	12.46%	11,306,916	8.80%	8.40%
269,690	18.32%	538,694	44.93%	26,559,130	20.68%	19.74%
37,000	2.51%	-	0.00%	11,292,370	8.79%	8.39%
1,472,451	100.00%	1,198,890	100.00%	128,454,181	100.00%	
1.15%		0.92%		100.00%		
-		-		2,500,000		
-		-		-		
-		-		394,800		
-		-		1,013,245		
-		-		2,200,000		
-		-		6,108,045		4.54%
\$ 1,472,451		\$ 1,198,890		\$ 134,562,226		100.00%
1.09%		0.89%		100.00%		



This page intentionally left blank.

South Texas College
Unrestricted Fund
Summary of Capital Expenditures by Function and Organization
Budget for Fiscal Year 2013

Organization Name	Organization Code	Total
Instruction		
Distance Education-Instructional	221001	\$ 25,000
Engineering	221302	20,000
Associate Degree Nursing	224005	75,000
Vocational Nursing	224018	20,000
Respiratory Therapy	224025	20,000
Distance Education Technology	520001	105,000
Total Instruction		265,000
Academic Support		
Library Acquisition	530002	191,943
BAT and Support Materials	530008	26,911
Inst Tech Maint & Replacement	540008	27,000
Total Academic Support		245,854
Student Services		
Admissions & Records	320001	149,342
Total Student Services		149,342
Institutional Support		
Public Information	120000	5,000
Business Office	410013	60,000
Office of Safety and Security	450002	90,394
STC Police	450051	63,500
Human Resources	460001	9,000
ITS Project Manager	510005	88,000
Phones Central Office	520002	202,800
Information Techonology	520004	20,000
Total Institutional Support		538,694
Total Capital Expenditures		\$ 1,198,890



This page intentionally left blank.

South Texas College
Auxiliary Fund
Summary of Revenues, Expenditures and Transfers - Budget and Actual
Comparison of Previous Fiscal Years with Fiscal Year Ending August 31, 2013

Fiscal Year	Revenues* / Expenditures / Transfers	Budget	Actual**
2010-2011	Revenues	\$ 2,090,528	\$ 1,879,009
	Expenditures and Transfers	\$ 2,090,528	\$ 1,421,243
2011-2012	Revenues	\$ 2,248,515	\$ 2,248,515
	Expenditures and Transfers	\$ 2,248,515	\$ 2,248,515
2012-2013	Revenues	\$ 2,126,501	
	Expenditures and Transfers	\$ 2,126,501	

* Revenues may include Fund Balance (Carryover)

** Projected for Fiscal Year 2012

The *Auxiliary Fund* accounts for transactions of self-supporting activities. The fund exists to provide goods or services to students, faculty, staff, other institutional departments, or incidentally to the general public. The assessed fee is directly related to, although not necessarily equal to, the cost of the goods or services. Examples include the College bookstore, food service, wellness center, child care center and general conferences.



This page intentionally left blank.

South Texas College
Restricted Fund
Summary of Revenues, Expenditures and Transfers - Budget and Actual
Comparison of Previous Fiscal Years with Fiscal Year Ending August 31, 2013

Fiscal Year	Revenues / Expenditures/Transfers	Budget	Actual*
2010-2011	Revenues and Transfers	\$ 74,935,579	\$ 82,877,023
	Expenditures and Transfers	\$ 74,935,579	\$ 83,586,203
2011-2012	Revenues and Transfers	\$ 74,910,030	\$ 74,910,030
	Expenditures and Transfers	\$ 74,910,030	\$ 74,910,030
2012-2013	Revenues and Transfers	\$ 79,115,684	
	Expenditures and Transfers	\$ 79,115,684	

* Projected for Fiscal Year 2012

The *Restricted Fund* accounts for operating funds that have been restricted for a specific purpose by external parties, grants, contracts, donors, or legislation.



This page intentionally left blank.

South Texas College
Plant Funds
Summary of Revenues, Expenditures and Transfers

Budget for Fiscal Year 2012 - 2013

Fund	Revenues and Transfers*	Expenditures and Transfers
Plant Fund - Unexpended - Construction Fund	\$ 7,183,125	\$ 7,183,125
Plant Fund - Renewals & Replacements Fund	\$ 10,442,564	\$ 10,442,564
Plant Fund - Retirement of Indebtedness Fund	\$ 12,267,403	\$ 12,267,403

*Amounts may include Fund Balance (Carryover).

The *Unexpended - Construction Fund* accounts for resources to be used for plant construction or acquisition.

The *Renewals and Replacements Fund* accounts for resources to be used for renewing and replacing facilities on existing College capital assets.

The *Retirement of Indebtedness Fund* accounts for funds held in reserve for paying principal and interest on debt, as well as related costs in accordance with bond indentures.



This page intentionally left blank.

**A RESOLUTION ADOPTING THE BUDGET OF
SOUTH TEXAS COLLEGE FOR THE FISCAL YEAR
BEGINNING SEPTEMBER 1, 2012 AND ENDING
AUGUST 31, 2013 IN ACCORDANCE WITH THE
PROVISIONS OF THE TEXAS EDUCATION CODE
AND ORDERING OTHER PROVISIONS RELATED TO
THE SUBJECT MATTER HEREOF.**

**BE IT ORDERED BY THE BOARD OF TRUSTEES OF SOUTH TEXAS
COLLEGE, THAT:**

SECTION I: The Budget Estimate of revenues for South Texas College District (the "College District") and the expenses of conducting the affairs thereof for the ensuing fiscal year beginning September 1, 2012, and ending August 31, 2013, as submitted by the President of the College, be, and the same is in all things, adopted and approved as the budget of all of the current revenues and expenses for the fiscal year beginning the 1st day of September, 2012, and ending the 31st day of August, 2013.

SECTION II: The amount of ad valorem taxes and revenue from other sources, as estimated by the President, is hereby appropriated out of the various Funds for the payment of operating expenses and capital outlay of the College District. A copy of the Budget Summary indicating such revenues and appropriating their expenditures is attached hereto and made a part hereof for all purposes as Exhibit "A" and shall remain on file in the Office of the President.

SECTION III: The sums indicated in Exhibit "A" are hereby appropriated in the Unrestricted Fund and College's Debt Service Fund out of the current year ad valorem taxes as collected for the purposes of maintenance and operation of the College District, as applicable, and applying the interest due on the general obligation bonds, redeeming the bonds as they mature, and creating sinking funds as required by such bonds.

SECTION IV: All Resolutions or parts of Resolutions in conflict herewith are hereby repealed.

SECTION V: This Resolution shall be and remain in full force and effect as of September 1, 2012.

SECTION VI: If any part, or parts, of this Resolution are found to be invalid or unconstitutional by a court having competent jurisdiction, then such invalidity or unconstitutionality shall not affect the remaining parts hereof and such remaining parts shall remain in full force and effect, and to the extent this Resolution is considered severable.

CONSIDERED, PASSED and APPROVED this 29th day of August, 2012 at a meeting of the Board of Trustees of South Texas College District at which a quorum was present and which was held in accordance with the Texas Government Code Chapter 551.

SIGNED this 29th day of August, 2012.

SOUTH TEXAS COLLEGE DISTRICT

By: 
Rose Benavidez, Chair

ATTEST:

By: 
Graciela Farias, Secretary



South Texas College

www.southtexascollege.edu

