



SOUTH TEXAS
COLLEGE

BUDGET

FY2019-2020

SERVING HIDALGO COUNTY
& STARR COUNTY, TEXAS



South Texas College Budget

Fiscal Year 2019-2020



**SOUTH TEXAS
COLLEGE**

Hidalgo County and Starr County, Texas

South Texas College
Budget
For The Fiscal Year Ending August 31, 2020

TABLE OF CONTENTS

INTRODUCTORY SECTION

Board of Trustees and President	1-3
Comprehensive Mission: Vision, Purpose, Core Values, Guiding Principles & Strategic Directions	4
Fact Sheet 2019-2020	5
Programs of Study 2019-2020	6
Summary of Fall Semester Headcount, Unduplicated Annual Headcount and Annual Full Time Equivalent (FTE)	7
Summary of Revenues and Transfers and Expenditures, Transfers and Reserves by Fund - Current and Plant Funds	8

UNRESTRICTED FUND REVENUES

Revenues by Source - Pie Chart.....	10
Revenues by Source - Comparison of Previous Fiscal Year with Fiscal Year Ending August 31, 2020 - Pie Chart	11
Summary of Revenues - Budget and Actual - Comparison of Previous Fiscal Years with Fiscal Year Ending August 31, 2020	12

UNRESTRICTED FUND EXPENDITURES

Expenditures by Function (Without Transfers and Reserves) - Pie Chart	14
Expenditures by Function - Comparison of Previous Fiscal Year with Fiscal Year Ending August 31, 2020 - Pie Chart	15
Expenditures by Classification (Without Transfers and Reserves) - Pie Chart	16
Expenditures by Classification - Comparison of Previous Fiscal Year with Fiscal Year Ending August 31, 2020 - Pie Chart	17
Summary of Expenditures by Function and Classification	18-19

UNRESTRICTED FUND CAPITAL EXPENDITURES

Summary of Capital Expenditures by Function and Organization	21
--	----

AUXILIARY FUND

Summary of Revenues, Expenditures and Transfers - Budget and Actual - Comparison of Previous Fiscal Years with Fiscal Year Ending August 31, 2020	23
--	----

South Texas College
Budget
For The Fiscal Year Ending August 31, 2020

TABLE OF CONTENTS *(Continued)*

RESTRICTED FUND

Summary of Revenues, Expenditures and Transfers - Budget and Actual - Comparison of Previous Fiscal Years with Fiscal Year Ending August 31, 2020	25
--	----

ENDOWMENT FUND

Summary of Revenues, Expenditures and Transfers – Budget and Actual - Comparison of Previous Fiscal Years with Fiscal Year Ending August 31, 2020	27
--	----

PLANT FUNDS

Summary of Revenues, Expenditures and Transfers	29
---	----

SECTION 140.0045 EXPENDITURES

Summary of Local Government Code Section 140.0045 Expenditures	31
--	----

RESOLUTION

Resolution Adopting the Budget of South Texas College for the Fiscal Year 2019-2020	33-34
---	-------

Introductory Section

South Texas College
Budget
For the Fiscal Year Ending August 31, 2020

Board of Trustees and President

PAUL R. RODRIGUEZ
CHAIRMAN



CEO of Valley Land Title Co.
District 3
Representing South McAllen, Southwest Pharr, Hidalgo, Sharyland, Southeast Mission, and Granjeno
First Term: August 2012 – May 2016
Second Term: May 2016 – May 2022
Serves as Chairman of the Board, member of the Finance, Audit, & Human Resources Committee, and member of the Facilities Committee.
Formerly served as Secretary of the Board, Chair and member of the Finance, Audit, & Human Resources Committee, and member of the Facilities Committee.

ROSE BENAVIDEZ
VICE CHAIR



President of Starr County Industrial Foundation
District 1
Representing Starr County
First Term: Nov. 2009 – May 2012
Second Term: May 2012 – May 2018
Third Term: May 2018 – May 2024
Serves as Vice Chair of Board, member of the Finance, Audit, & Human Resources Committee, and member of the Facilities Committee.
Formerly served as Chair and Vice Chair of the Board, member of the Facilities Committee, and member of the Finance, Audit, & Human Resources Committee.

ROY DE LEÓN
SECRETARY



Branch Retail Executive of BBVA Compass Bank – Mercedes
District 7
Representing Northeast Hidalgo County, North Weslaco, Edcouch, Elsa, La Villa, Mercedes, Monte Alto, Northeast Alamo, Northeast Edinburg, and Hargill
(Appointed 1997 - 1998)
First Term: May 1998 – May 2002
Second Term: May 2002 – May 2008
Third Term: May 2008 – May 2014
Fourth Term: May 2014 – May 2020
Serves as Secretary of the Board and Chair of the Finance, Audit, & Human Resources Committee.
Formerly served as Chair, Vice Chair, and Secretary of the Board, Chair and member of the Finance, Audit, & Human Resources Committee, and member of the Facilities Committee.

South Texas College
Budget
For the Fiscal Year Ending August 31, 2020

Board of Trustees and President

VICTORIA CANTU
MEMBER



CEO of Children's Education Station, LLC
District 2
Representing La Joya, Western Mission, Palmview, Sullivan City, Penitas, and Western Alton
First Term: May 2018 – May 2024
Serves as member of the Education and Workforce Development Committee.

GARY GURWITZ
MEMBER



Managing Partner, Atlas, Hall & Rodriguez, L.L.P., McAllen
District 4
Representing North McAllen, Northwest Pharr, Palmhurst, Northeast Mission, and Southwest Edinburg
(Appointed 1993 - 1998)
Second Term: May 1998 – May 2004
Third Term: May 2004 – May 2010
Fourth Term: May 2010 – May 2016
Fifth Term: May 2016 – May 2022
Serves as Chair of the Facilities Committee and member of the Education and Workforce Development Committee.
Formerly served as Chair, Vice Chair, and Secretary of the Board, Chair and member of the Facilities Committee, member of the Finance, Audit, & Human Resources Committee, and member of the Education and Workforce Development Committee.

DR. ALEJO SALINAS, JR.
MEMBER



Retired Superintendent/Superintendent Emeritus, Hidalgo ISD
District 5
Representing Northwest Hidalgo County, Edinburg, North San Juan, and Northeast Pharr
First Term: May 1996 – May 2002
Second Term: May 2002 – May 2008
Third Term: May 2008 – May 2014
Fourth Term: May 2014 – May 2020
Serves as Chair of the Education and Workforce Development Committee and member of the Facilities Committee.
Formerly served as Chair and Vice Chair of the Board, Chair and member of the Facilities Committee, Chair and member of the Education and Workforce Development Committee, and member of the Finance, Audit, & Human Resources Committee.

South Texas College
Budget
For the Fiscal Year Ending August 31, 2020

Board of Trustees and President

RENE GUAJARDO
MEMBER



Human Resources Director, Mercedes ISD
District 6
Representing Donna, South Alamo, South San Juan, Southeast Pharr, South
Weslaco, and Progreso
First Term: May 2018 – May 2024
Serves as member of the Finance, Audit, & Human Resources Committee.
Formerly served as member of the Education and Workforce Development
Committee.

DR. SHIRLEY A. REED
PRESIDENT



Founding College President: June 1994 - Present



Vision, Mission, and Core Values

Comprehensive Mission for South Texas College

VISION STATEMENT

South Texas College will be a global model in educational innovation serving as a catalyst to drive regional prosperity, economic development, and the social mobility of those we serve.

MISSION STATEMENT

South Texas College is a public institution of higher education that provides educational opportunities through excellence in teaching and learning, workforce development, cultural enrichment, community service, and regional and global collaborations.

CORE VALUES

Student Success: We are committed to the personal, academic and career goals of each student.

Excellence: We are committed to excellence and innovation in teaching, learning, and services.

Opportunity: We are committed to providing access and support for students to achieve their academic and career goals.

Community: We are committed to equitable results through inclusion, diversity, collaboration, and engagement.

Integrity: We are committed to being respectful, professional, honest, accountable, and transparent.





FACT SHEET



ABOUT

Founded in 1993, South Texas College is accredited by the Commission on Colleges of the Southern Association of Colleges and Schools to award baccalaureate and associate degrees. Over 32,000 credit and over 13,000 non-credit students attend STC, and a faculty and staff of more than 2,600 serve STC's five state of the art campuses, two Higher Education Centers and one virtual campus.

CREATION

South Texas College was created on September 1, 1993, by Texas Senate Bill 251 to serve Hidalgo and Starr counties. A confirmation election, held on August 12, 1995, established a taxing district for the college. Seven districts, based on population, were also approved for single-member representation on the Board of Trustees. A community leader from each of the seven districts was originally appointed by Governor Ann Richards to serve on the founding Board of Trustees. Since then, an election process has been established, and all board members are elected for six year terms.

DUAL CREDIT

South Texas College is a model of collaboration with public schools and has one of the largest dual credit programs in the state of Texas. A variety of dual credit programs have been instituted, including six academies, drop-out recovery programs and other unique initiatives with 24 school districts, and over 70 high school sites throughout Hidalgo and Starr counties. The programs allow eligible students to take college courses while attending high school. The Dual Credit Program at STC is one of the largest in the state of Texas and has provided tuition-free dual credit to over 106,000 high school students, saving families over \$200 million in tuition since 2000. In addition, South Texas College leads the nation in the number of Early College High School partnerships developed with area Independent School Districts. This includes 29 Early College High Schools and two Career and Technical Early College High Schools.

CONTINUING, PROFESSIONAL & WORKFORCE EDUCATION

The program provides opportunities for lifelong learners who want to upgrade their skills, change careers, renew licenses and certifications, or seek personal enrichment. There is a wide variety of course offerings including online classes. Additionally the division also offers customized training to area businesses, industries and the community. Training programs are tailored to a client's specific needs in terms of content, schedule and location.

ARTICULATION AGREEMENTS

For those students who wish to continue their education beyond an associate's degree, STC has more than 80 articulation agreements in place with colleges across the country.

ACCREDITATION

South Texas College is accredited by the Southern Association of Colleges and Schools Commission on Colleges to award the Baccalaureate and Associate degrees. Contact the Commission on Colleges at 1866 Southern Lane, Decatur, Georgia 30033-4097 or call 404-679-4500 for questions about the accreditation of South Texas College.

South Texas College's offerings are approved by the Texas Higher Education Coordinating Board and the Texas Education Agency.

ASSOCIATE DEGREES AND CERTIFICATES

South Texas College offers 121 degree and Certificate program options, including Associate's degrees in a variety of art, science, technology and allied health fields of study. The college also offers 32 online associate degrees and certificates options through South Texas College Online.

BACCALAUREATE DEGREES

South Texas College is proud to be one of four community colleges in the State of Texas accredited to offer baccalaureate degrees in Applied Technology and Applied Science. South Texas College offers Bachelor of Applied Technology degrees in Technology Management, Computer and Information Technologies, and Medical and Health Services Management. A Bachelor of Applied Science in Organizational Leadership is also offered. Additionally, South Texas College was granted legislative authority during the 85th Legislative Session to offer the Bachelor of Science in Nursing.

SOUTH TEXAS COLLEGE ONLINE

Through South Texas College Online, students not only have access to more than 241 unique online courses, full online library services, registration, advising, counseling, payment services, financial aid, bookstore and testing, and so much more. Currently 19 associate degrees, 9 certificates and all four bachelor programs are available online, making it possible for students to earn their degrees without ever setting foot on campus.

INDUSTRY TRAINING & ECONOMIC DEVELOPMENT

South Texas College is the fiscal agent and home of the executive offices for the North American Advanced Manufacturing Research and Education Initiative (NAAMREI). In addition, the Institute for Advanced Manufacturing (IAM) is linked to all community and technical colleges in the region. South Texas College has taken the lead in helping train workers to fuel a regional manufacturing economy and to support innovations in rapid response manufacturing.

ADA COMPLIANCE

In accordance with the Americans with Disabilities Act of 1990, Title IX of the Education Amendment of 1972, and Section 504 of the Vocational Rehabilitation Act of 1973, South Texas College provides accommodations as required by law to afford equal educational opportunities to all people. For questions about the accreditation of South Texas College, contact the Commission on Colleges at (404) 679-4500.

BOARD OF TRUSTEES

Paul R. Rodriguez
Chairman

Rose Benavidez
Vice Chair

Roy de León
Secretary

Victoria Cantú
Member

Rene Guajardo
Member

Gary Gurwitz
Member

Dr. Alejo Salinas, Jr.
Member

PRESIDENT

Shirley A. Reed
M.B.A., Ed.D

LOCATIONS

Pecan Campus
McAllen, TX

Mid-Valley Campus
Weslaco, TX

Starr County Campus
Rio Grande City, TX

Technology Campus
McAllen, TX

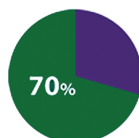
Dr. Ramiro R. Casso
Nursing & Allied Health Campus
McAllen, TX

STC Regional Center
for Public Safety Excellence
Pharr, TX

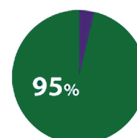
Higher Education Center at La Joya
La Joya, TX

Higher Education Center at Pharr
Pharr, TX

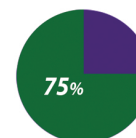
VITAL STATISTICS



More than 70% of student population are the first in their families to attend college



More than 95% of students are Hispanic



More than 75% take advantage of some form of financial aid (excluding dual enrollment students)

Class size averages 26 students per faculty member



SOUTHTEXASCOLLEGE.EDU

For the 2019-2020 academic year South Texas College has 123 degrees and certificates available to its students: 5 Baccalaureate degrees, one Associate of Arts Degree in 19 fields of study, one Associate of Arts in Teaching in 3 fields of study, one Associate of Science Degree in 9 fields of study, 31 Associate of Applied Science Degrees, and 56 Certificates.

BUSINESS, PUBLIC SAFETY, & TECHNOLOGY

ASSOCIATE OF ARTS DEGREE

Field of Study
Business Administration-Transfer Plan

ASSOCIATE OF APPLIED SCIENCE DEGREES

Administrative Office Assistant
Automotive Technology
-Specialization: GM-ASEP
Architectural and Engineering Design Technology
-Specializations: Architectural and Civil Engineering Technology
Architectural and Visual Technology
Business Administration
-Specializations: Accounting
Import/Export/Logistics
Management
Marketing
Computer & Advanced Technologies
-Specializations: Computer Maintenance Technology
Computer Support
and Telecommunication Specialist
Construction Supervision
Culinary Arts
-Specialization: Baking and Pastry Arts
Diesel Technology
Electrician Technology
Fire Science Technology
Heating, Ventilation, Air Conditioning & Refrigeration Technology
Human Resource Specialist
Information Technology
-Specializations: Computer Specialist
Cybersecurity Specialist
Networking Specialist
Law Enforcement
Legal Office Assistant
Paralegal
Precision Manufacturing Technology
Public Administration
Welding

CERTIFICATES

Accounting Clerk
Architectural and Civil Engineering Technology
Architectural and Engineering Design Technology
Architectural and Visual Technology
Automotive Maintenance and Light Repair***
Automotive Technology
Basic Firefighter
Basic Peace Officer
Cloud Computing and Virtualization Specialist
Combination Welding
Commercial Baking
Commercial Cooking
Computer and Information Technologies Specialist
Computer and Internet Specialist
Computer and Network Specialist
Computer Applications Specialist
Computer Maintenance Specialist
Construction Supervision Assistant
Cybersecurity Specialist
Diesel Technology
Electrician Assistant

Employee and Labor Relations Assistant
Fast Start Precision Manufacturing
Heating, Ventilation, Air Conditioning & Refrigeration Technology
Human Resource Assistant
Import/Export
Legal Office Specialist
Logistics
Management
Marketing
Mechatronics Technology Specialist
Multimedia Specialist
Office Specialist
Payroll Assistant
Precision Manufacturing Technology
Public Services Assistant
Recruiter Assistant
Structural Welding
Telecommunication Support Specialist
Voice and Data Technician

LIBERAL ARTS & SOCIAL SCIENCES

ASSOCIATE OF ARTS DEGREES

Fields of Study
Fine and Performing Arts--
Drama
Graphic Arts
Music
Visual Arts

Humanities--
English
History
Interdisciplinary Studies
Language and Cultural Studies
Concentration: -American Sign Language
-Spanish
Mexican-American Studies
Philosophy

Social and Behavioral Sciences--
Anthropology
Communication
Concentration: -Advertising/Public Relations
-Communication Studies

Criminal Justice
Kinesiology
Political Science
Psychology
Social Work
Sociology

ASSOCIATE OF ARTS IN TEACHING

Fields of Study
EC-6 Generalist
4-8 Generalist
8-12

ASSOCIATE OF APPLIED SCIENCE DEGREES

American Sign Language and Interpreting Studies
-Specialization: Sign Language Interpreter
Child Development & Early Childhood

CERTIFICATES

Child Development & Early Childhood
Administration of Early Childhood Programs
-Specializations: Infant and Toddler
Pre-School
Deaf Support Specialist
Personal Trainer
Trilingual Interpreter (Enhanced Skills Certificate)

MATH, SCIENCE & BACHELOR PROGRAMS

ASSOCIATE OF SCIENCE DEGREES

Fields of Study
Biology
Chemistry
Computer Information Systems
Computer Science
Engineering
Interdisciplinary Studies
Mathematics
Physics
Pre-Pharmacy

BACCALAUREATE DEGREES

Bachelor of Applied Science in:
Organizational Leadership

Bachelor of Applied Technology in:
Computer and Information Technologies
Medical and Health Services Management
Technology Management

Bachelor of Science in:
Nursing: RN to BSN**

NURSING & ALLIED HEALTH

ASSOCIATE OF APPLIED SCIENCE DEGREES

Associate Degree Nursing
-LVN/RN Transition
-EMT Paramedic to RN
Diagnostic Medical Sonography**
Emergency Medical Technology-Paramedic
Health Information Technology
Medical Assistant Technology
Occupational Therapy Assistant
Pharmacy Technology
Physical Therapist Assistant
Radiologic Technology
Respiratory Therapy

CERTIFICATES

Diagnostic Medical Sonography (Advanced Technical Certificate)
Electronic Health Records Specialist
Emergency Medical Technician-Basic
Emergency Medical Technician-Advanced***
Emergency Medical Technician-Paramedic*
Medical Assistant Technology
Medical Coding Specialist
Medical Information/Transcription Specialist
Medical Office Specialist
Patient Care Assistant
Vocational Nursing

*This is a two-year certificate.

** Pending approval from Southern Association of Colleges and Schools Commission on Colleges and Department

***Pending approval from the Texas Higher Education Coordinating Board, Southern Association of Colleges and Schools Commission on Colleges and Department of Education.

South Texas College

Summary of Fall Semester Headcount, Unduplicated Annual Headcount and Annual Full Time Equivalent (FTE)

Academic Year	Fall Semester Headcount	Unduplicated Annual Headcount	Annual FTE
1993 - 94	1,055	2,719	1,318
1994 - 95	2,227	4,720	2,221
1995 - 96	3,254	6,893	3,087
1996 - 97	5,416	9,756	4,696
1997 - 98	6,849	11,861	5,737
1998 - 99	9,598	14,391	7,572
1999 - 00	10,364	15,214	7,901
2000 - 01	11,183	16,793	8,343
2001 - 02	12,443	18,357	9,275
2002 - 03	13,691	20,447	10,173
2003 - 04	15,228	21,927	10,529
2004 - 05	17,035	23,847	11,384
2005 - 06	16,233	23,594	11,147
2006 - 07	18,460	25,423	11,675
2007 - 08	19,808	27,940	12,805
2008 - 09	21,666	30,734	14,162
2009 - 10	26,368	36,169	17,918
2010 - 11	28,006	36,951	18,708
2011 - 12	29,513	38,900	18,747
2012 - 13	29,812	40,009	19,230
2013 - 14	30,233	40,458	19,509
2014 - 15	30,849	42,079	19,773
2015 - 16	33,994	45,665	21,422
2016 - 17	33,044	44,768	21,239
2017 - 18	31,374	43,251	21,394
2018 - 19	31,640		
2019 - 20*	32,419		

* Projected

South Texas College
Current & Plant Funds
Summary of Revenues and Transfers and Expenditures,
Transfers and Reserves by Fund

Budget for Fiscal Year 2019 - 2020

Fund	Revenues and Transfers*	Expenditures, Transfers and Reserves
Unrestricted Fund	\$ 181,730,329	\$ 181,730,329
Auxiliary Fund	\$ 4,891,952	\$ 4,891,952
Restricted Fund	\$ 81,031,544	\$ 81,031,544
Endowment Fund	\$ 6,013	\$ 6,013
Plant Fund - Unexpended - Construction	\$ 17,037,045	\$ 17,037,045
Plant Fund - Renewals & Replacements	\$ 7,624,000	\$ 7,624,000
Plant Fund - Retirement of Indebtedness	\$ 13,804,501	\$ 13,804,501

* Amounts may include Fund Balance (Carryover).

Unrestricted Fund Revenues



SOUTH TEXAS COLLEGE

This page intentionally left blank.

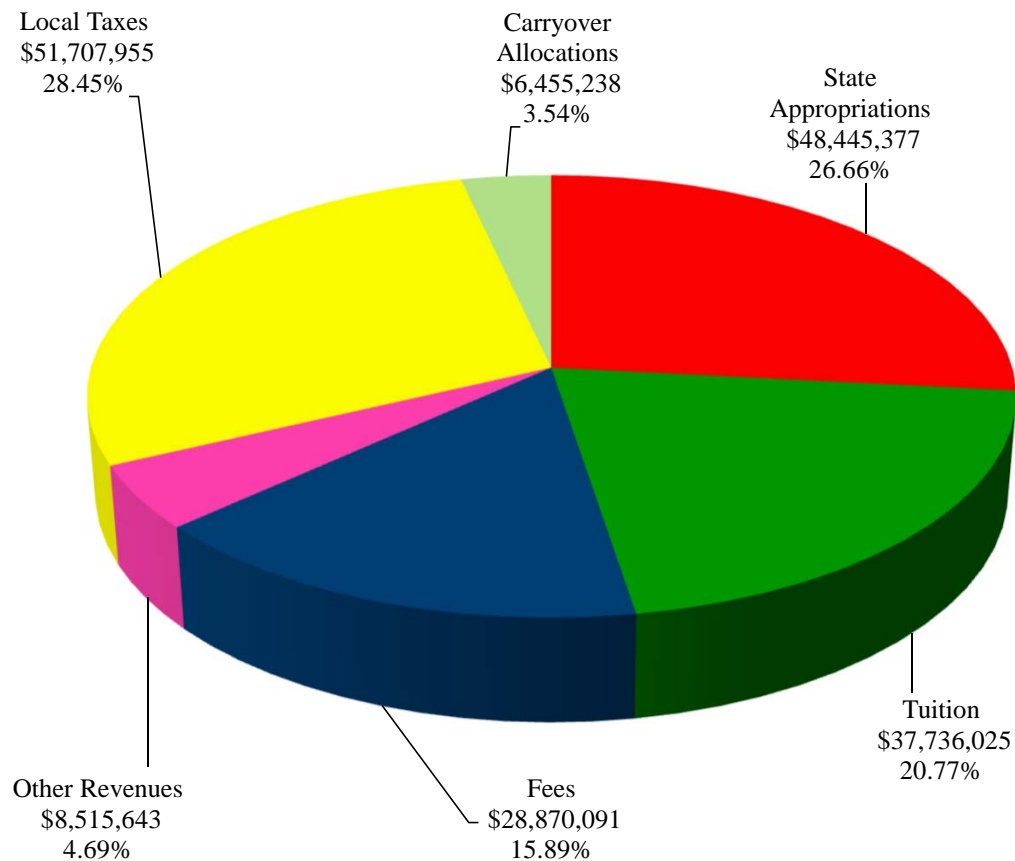
South Texas College

Unrestricted Fund

Revenues by Source

Budget for Fiscal Year 2019- 2020

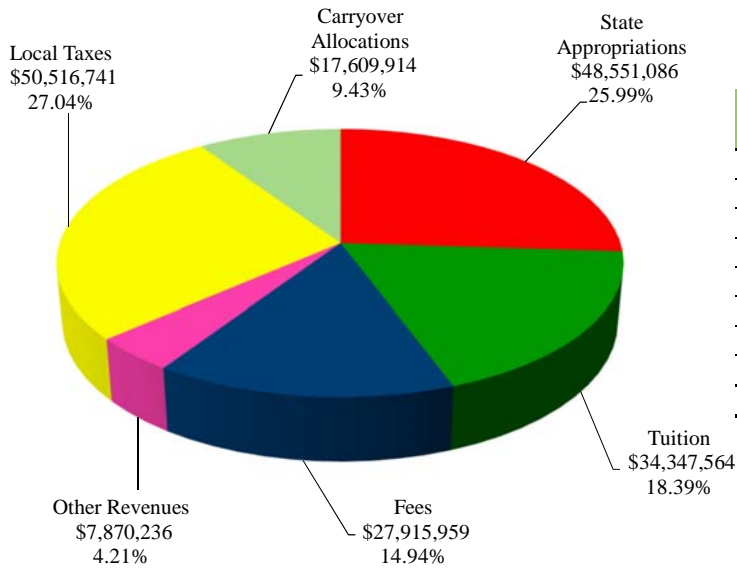
Source of Revenues	FY '20 Budget	Percentage
State Appropriations	\$ 48,445,377	26.66%
Tuition	37,736,025	20.77%
Fees	28,870,091	15.89%
Other Revenues	8,515,643	4.69%
Local Taxes	51,707,955	28.45%
Carryover Allocations	6,455,238	3.54%
Total Revenues	\$ 181,730,329	100.00%



South Texas College Unrestricted Fund Revenues by Source

Comparison of Previous Fiscal Year with Fiscal Year Ending August 31, 2020

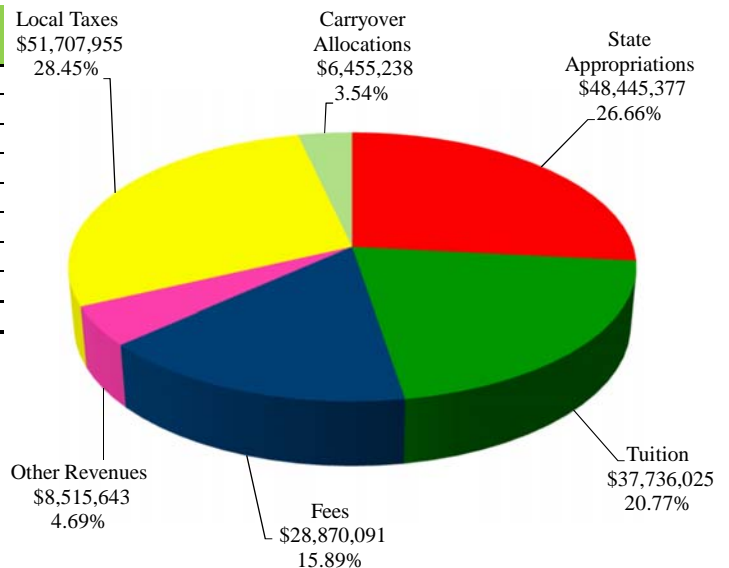
Fiscal Year 2019



Source of Revenues	FY '19 Budget (As Amended)	Percentage
State Appropriations	\$ 48,551,086	25.99%
Tuition	34,347,564	18.39%
Fees	27,915,959	14.94%
Other Revenues	7,870,236	4.21%
Local Taxes	50,516,741	27.04%
Carryover Allocations	17,609,914	9.43%
Total Revenues	\$ 186,811,500	100.00%

Fiscal Year 2020

Source of Revenues	FY '20 Budget	Percentage
State Appropriations	\$ 48,445,377	26.66%
Tuition	37,736,025	20.77%
Fees	28,870,091	15.89%
Other Revenues	8,515,643	4.69%
Local Taxes	51,707,955	28.45%
Carryover Allocations	6,455,238	3.54%
Total Revenues	\$ 181,730,329	100.00%



South Texas College

Unrestricted Fund

Summary of Revenues - Budget and Actual

Comparison of Previous Fiscal Years with Fiscal Year Ending August 31, 2020

Revenue Source	FY '18 Budget (As Amended)	FY '18 Actual	FY '19 Budget (As Amended)	FY '19 Estimated*	FY '20 Budget
State Appropriations	\$ 48,450,491	\$ 48,398,217	\$ 48,551,086	\$ 48,563,897	\$ 48,445,377
Tuition	33,653,172	31,123,078	34,347,564	32,217,193	37,736,025
Fees	27,669,015	28,572,893	27,915,959	28,612,151	28,870,091
Other Revenues	6,672,998	7,942,611	7,870,236	9,149,406	8,515,643
Local Taxes	48,691,317	48,931,234	50,516,741	53,481,622	51,707,955
Carryover Allocations	26,946,624	26,946,624	17,609,914	17,609,914	6,455,238
Total Unrestricted Fund Revenues	\$ 192,083,617	\$ 191,914,657	\$ 186,811,500	\$ 189,634,183	\$ 181,730,329

* Amounts are estimated. Actual amounts will be available after fiscal year end and completion of audit.

The Unrestricted Fund includes those economic resources of the college which are expendable for the purpose of performing the primary missions of the institution-instruction, research, and public service - and which are not restricted by external sources or designated by the governing board of other than operating expenditures.

Note:

State Appropriations Revenues include state on-behalf benefits which are budgeted in the Unrestricted Fund and are subsequently transferred to the Restricted Fund along with related expenditures for Annual Financial Report purposes.

Unrestricted Fund Expenditures



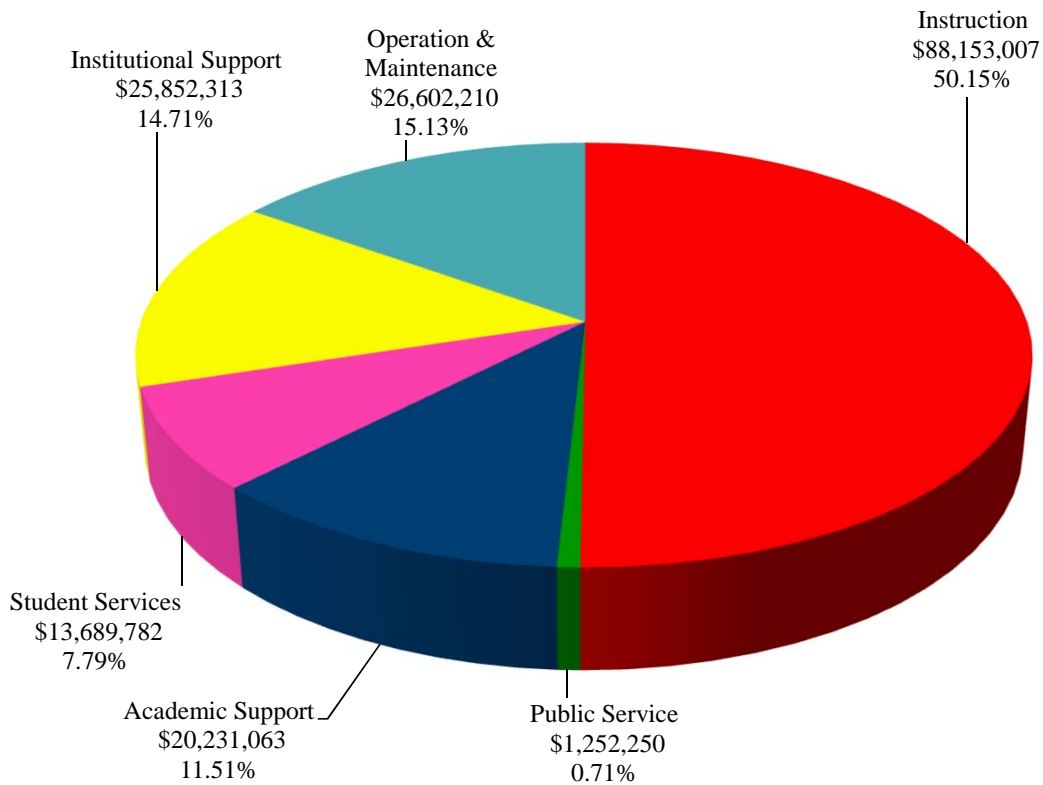
SOUTH TEXAS COLLEGE

This page intentionally left blank.

South Texas College
Unrestricted Fund
Expenditures by Function
(Without Transfers and Reserves)

Budget for Fiscal Year 2019 - 2020

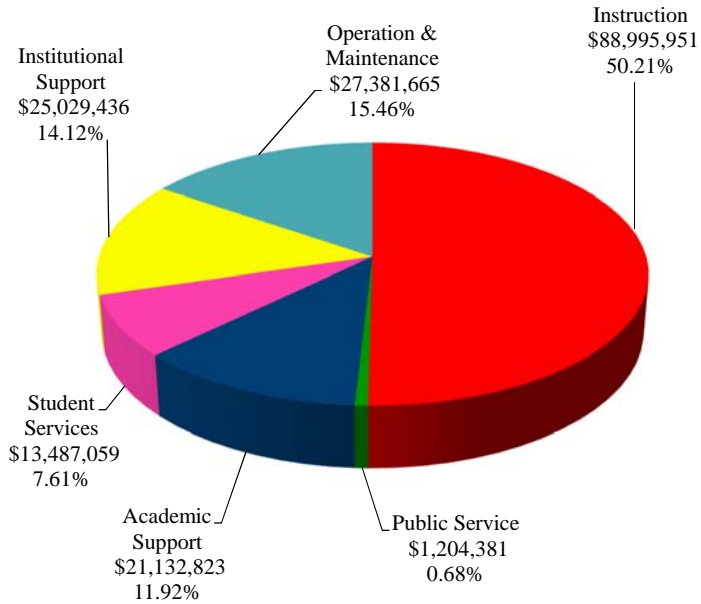
Function	FY '20 Budget	Percentage
Instruction	\$ 88,153,007	50.15%
Public Service	1,252,250	0.71%
Academic Support	20,231,063	11.51%
Student Services	13,689,782	7.79%
Institutional Support	25,852,313	14.71%
Operation & Maintenance	26,602,210	15.13%
Total Expenditures	\$ 175,780,625	100.00%



South Texas College Unrestricted Fund Expenditures by Function (Without Transfers and Reserves)

Comparison of Previous Fiscal Year with Fiscal Year Ending August 31, 2020

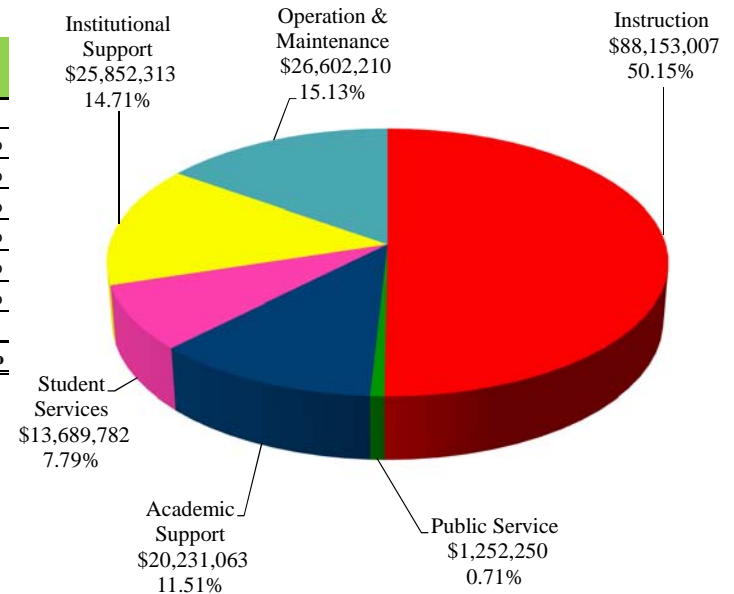
Fiscal Year 2019



Function	FY '19 Budget (As Amended)	Percentage
Instruction	\$ 88,995,951	50.21%
Public Service	1,204,381	0.68%
Academic Support	21,132,823	11.92%
Student Services	13,487,059	7.61%
Institutional Support	25,029,436	14.12%
Operation & Maintenance	27,381,665	15.46%
Total Expenditures	\$ 177,231,315	100.00%

Fiscal Year 2020

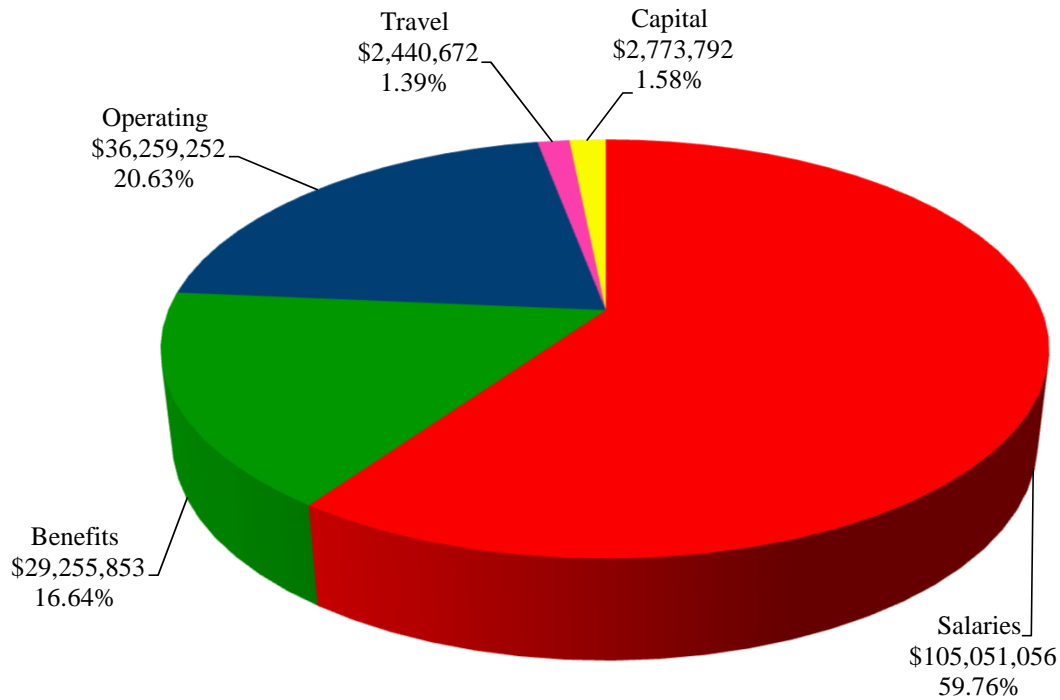
Function	FY '20 Budget	Percentage
Instruction	\$ 88,153,007	50.15%
Public Service	1,252,250	0.71%
Academic Support	20,231,063	11.51%
Student Services	13,689,782	7.79%
Institutional Support	25,852,313	14.71%
Operation & Maintenance	26,602,210	15.13%
Total Expenditures	\$ 175,780,625	100.00%



South Texas College
Unrestricted Fund
Expenditures by Classification
(Without Transfers and Reserves)

Budget for Fiscal Year 2019 - 2020

Classification	FY '20 Budget	Percentage
Salaries	\$ 105,051,056	59.76%
Benefits	29,255,853	16.64%
Operating	36,259,252	20.63%
Travel	2,440,672	1.39%
Capital	2,773,792	1.58%
Total Expenditures	\$ 175,780,625	100.00%



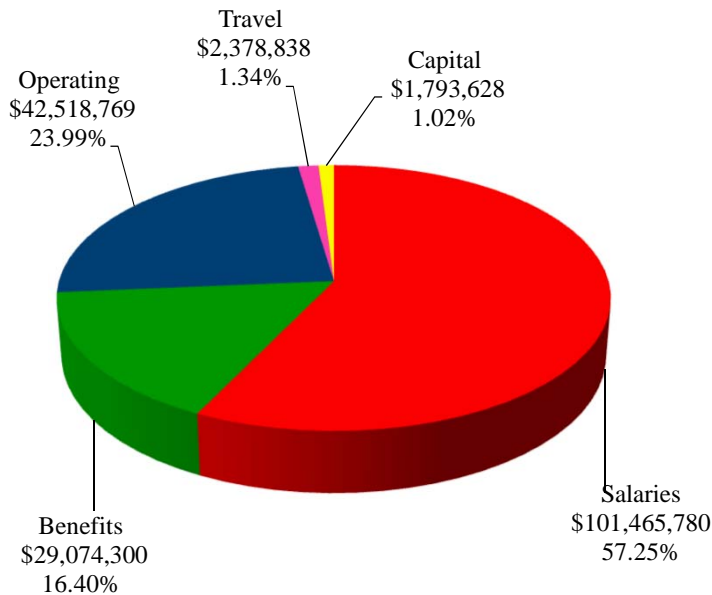
South Texas College

Unrestricted Fund

Expenditures by Classification (Without Transfers and Reserves)

Comparison of Previous Fiscal Year with Fiscal Year Ending August 31, 2020

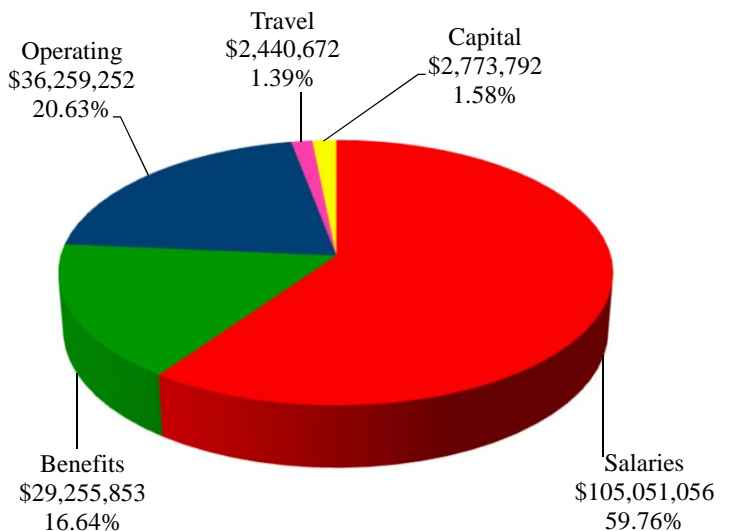
Fiscal Year 2019



Classification	FY '19 Budget (As Amended)	Percentage
Salaries	\$ 101,465,780	57.25%
Benefits	29,074,300	16.40%
Operating	42,518,769	23.99%
Travel	2,378,838	1.34%
Capital	1,793,628	1.02%
Total Expenditures	\$ 177,231,315	100.00%

Fiscal Year 2020

Classification	FY '20 Budget	Percentage
Salaries	\$ 105,051,056	59.76%
Benefits	29,255,853	16.64%
Operating	36,259,252	20.63%
Travel	2,440,672	1.39%
Capital	2,773,792	1.58%
Total Expenditures	\$ 175,780,625	100.00%



South Texas College
Unrestricted Fund
Summary of Expenditures by Function and Classification
Budget for Fiscal Year 2019 - 2020

Function / Classification	Salaries	Percent of Total	Benefits	Percent of Total	Operating	Percent of Total
Instruction	\$ 59,831,510	56.96%	\$ 16,484,223	56.35%	\$ 9,074,517	25.03%
Public Service	607,500	0.58%	90,944	0.31%	513,560	1.42%
Academic Support	12,456,004	11.86%	3,304,725	11.30%	3,679,585	10.15%
Student Services	8,891,565	8.46%	2,500,459	8.55%	1,995,060	5.50%
Institutional Support	12,357,387	11.76%	3,638,456	12.44%	9,258,053	25.53%
Operation & Maintenance - Plant	10,907,090	10.38%	3,237,046	11.05%	11,738,477	32.37%
Total - Without Transfers & Reserves	105,051,056	100.00%	29,255,853	100.00%	36,259,252	100.00%
Percent of Total Expenditures Without Transfers & Reserves	59.76%		16.64%		20.63%	
Transfers and Reserves						
Transfer-Construction Fund	-		-		3,000,000	
Transfer-ITED	-		-		949,704	
Contingency	-		-		2,000,000	
Total Transfers and Reserves	-		-		5,949,704	
Total Unrestricted Budget Expenditures/Transfers/Reserves	\$ 105,051,056		\$ 29,255,853		\$ 42,208,956	
Percent of Total Expenditures With Transfers and Reserves	57.81%		16.10%		23.23%	

South Texas College

Unrestricted Fund

Summary of Expenditures by Function and Classification

Budget for Fiscal Year 2019 - 2020

(Continued)

Travel	Percent of Total	Capital	Percent of Total	Total	Percent of Total Budget W/O Trans/Reserv	Percent of Total Budget With Trans/Reserv
\$ 1,172,946	48.06%	\$ 1,589,811	57.32%	\$ 88,153,007	50.15%	48.51%
37,484	1.54%	2,762	0.10%	1,252,250	0.71%	0.69%
422,579	17.31%	368,170	13.27%	20,231,063	11.51%	11.13%
255,059	10.45%	47,639	1.72%	13,689,782	7.79%	7.53%
380,610	15.59%	217,807	7.85%	25,852,313	14.71%	14.23%
171,994	7.05%	547,603	19.74%	26,602,210	15.13%	14.64%
2,440,672	100.00%	2,773,792	100.00%	175,780,625	100.00%	96.73%
1.39%		1.58%		100.00%		
-		-		3,000,000		
-		-		949,704		
-		-		2,000,000		
-		-		5,949,704		3.27%
\$ 2,440,672		\$ 2,773,792		\$ 181,730,329		100.00%
1.34%		1.52%		100.00%		



SOUTH TEXAS COLLEGE

This page intentionally left blank.

Unrestricted Fund Capital Expenditures

South Texas College
Unrestricted Fund
Summary of Capital Expenditures by Function and Organization

Budget for Fiscal Year 2020

Organization Name	Organization Code	Total
Instruction		
Distance Ed Instructional Tech	211002	\$ 115,000
Biology	221301	50,408
Emergency Medical Technology	224003	62,500
Pharmacy Technology	224010	160,000
FEE Unallocated - Instruction	436121	868,000
Technology-Instruction	Multiple	333,903
Total Instruction		1,589,811
Public Service		
Technology-Public Service	Multiple	2,762
Total Public Service		2,762
Academic Support		
FEE Unallocated - Academic Support	436122	75,000
Library Acquisition	530002	200,850
BAT and Support Materials	530008	33,231
Library Art Gallery	530010	1,000
Educ Tech Maintenance & Replacement	540008	30,000
Technology-Academic Support	Multiple	28,089
Total Academic Support		368,170
Student Services		
Student Activities & Wellness	350032	12,000
Technology-Student Services	Multiple	35,639
Total Student Services		47,639
Institutional Support		
Business Office	410013	70,000
Student Transportation Services	431010	95,000
Technology-Institutional Support	Multiple	52,807
Total Institutional Support		217,807
Operation & Maintenance		
FEE Unallocated - O & M	436120	243,000
Campus Police	450051	259,803
Technology-Operation & Maintenance	Multiple	44,800
Total Operation & Maintenance		547,603
Total Capital Expenditures		\$ 2,773,792



SOUTH TEXAS COLLEGE

This page intentionally left blank.

Auxiliary Fund

South Texas College
Auxiliary Fund
Summary of Revenues, Expenditures and Transfers - Budget and Actual
Comparison of Previous Fiscal Years with Fiscal Year Ending August 31, 2020

Fiscal Year	Revenues* / Expenditures / Transfers	Budget	Actual**
2017-2018	Revenues	\$ 4,890,472	\$ 3,628,428
	Expenditures and Transfers	\$ 4,890,472	\$ 3,355,013
2018-2019	Revenues	\$ 4,970,330	\$ 4,970,330
	Expenditures and Transfers	\$ 4,970,330	\$ 4,970,330
2019-2020	Revenues	\$ 4,891,952	
	Expenditures and Transfers	\$ 4,891,952	

* Revenues may include Fund Balance (Carryover)

** Projected for Fiscal Year 2019

The *Auxiliary Fund* accounts for transactions of self-supporting activities. The fund exists to provide goods or services to students, faculty, staff, other institutional departments, or incidentally to the general public. The assessed fee is directly related to, although not necessarily equal to, the cost of the goods or services. Examples include the College bookstore, food service, wellness center, child care center and general conferences.



SOUTH TEXAS COLLEGE

This page intentionally left blank.

Restricted Fund

South Texas College
Restricted Fund
Summary of Revenues, Expenditures and Transfers - Budget and Actual
Comparison of Previous Fiscal Years with Fiscal Year Ending August 31, 2020

Fiscal Year	Revenues / Expenditures/Transfers	Budget	Actual*
2017-2018	Revenues and Transfers	\$ 72,506,975	\$ 73,597,541
	Expenditures and Transfers	\$ 72,506,975	\$ 73,951,361
2018-2019	Revenues and Transfers	\$ 80,979,938	\$ 80,979,938
	Expenditures and Transfers	\$ 80,979,938	\$ 80,979,938
2019-2020	Revenues and Transfers	\$ 81,031,544	
	Expenditures and Transfers	\$ 81,031,544	

* Projected for Fiscal Year 2019

The *Restricted Fund* accounts for operating funds that have been restricted for a specific purpose by external parties, grants, contracts, donors, or legislation.



SOUTH TEXAS COLLEGE

This page intentionally left blank.

Endowment Fund

South Texas College
Endowment Fund
Summary of Revenues, Expenditures and Transfers - Budget and Actual
Comparison of Previous Fiscal Years with Fiscal Year Ending August 31, 2020

Fiscal Year	Revenues* / Expenditures / Transfers	Budget	Actual**
2017-2018	Revenues	\$ 4,159	\$ 5,862
	Expenditures and Transfers	\$ 4,159	\$ 5,862
2018-2019	Revenues	\$ 5,820	\$ 11,984
	Expenditures and Transfers	\$ 5,820	\$ 11,984
2019-2020	Revenues	\$ 6,013	
	Expenditures and Transfers	\$ 6,013	

* Revenues may include Fund Balance (Carryover)

** Projected for Fiscal Year 2019

The *Endowment Fund* accounts for donor restricted gifts that are invested as per the donor's stated terms.



SOUTH TEXAS COLLEGE

This page intentionally left blank.

Plant Funds

South Texas College
Plant Funds
Summary of Revenues, Expenditures and Transfers

Budget for Fiscal Year 2019 - 2020

Fund	Revenues and Transfers*	Expenditures and Transfers
Plant Fund - Unexpended - Construction Fund	\$ 17,037,045	\$ 17,037,045
Plant Fund - Renewals & Replacements Fund	\$ 7,624,000	\$ 7,624,000
Plant Fund - Retirement of Indebtedness Fund	\$ 13,804,501	\$ 13,804,501

*Amounts may include Fund Balance (Carryover).

The *Unexpended - Construction Fund* accounts for resources to be used for plant construction or acquisition.

The *Renewals and Replacements Fund* accounts for resources to be used for renewing and replacing facilities on existing College capital assets.

The *Retirement of Indebtedness Fund* accounts for funds held in reserve for paying principal and interest on debt, as well as related costs in accordance with bond indentures.



SOUTH TEXAS COLLEGE

This page intentionally left blank.

Section 140.0045

Expenditures

South Texas College
Summary of Local Government Code Section 140.0045 Expenditures
Itemization of Certain Expenditures Required in Certain Political Subdivision Budgets**
Comparison of Previous Fiscal Year with Fiscal Year Ending August 31, 2020

Expenditures	FY '19 Budget	FY '19 Actual*	FY '20 Budget
Total Section 140.0045 Expenditures	\$ 43,345	\$ 43,345	\$ 42,716

The budgeted and estimated expenditure amounts are included in various departmental organization budgets.

* Amounts are estimated. Audited actual amounts will be available after fiscal year end and completion of financial audit.

** Expenditures for directly or indirectly influencing or attempting to influence the outcome of legislation or administrative action as those terms are defined in Section 305.002, Government Code.



SOUTH TEXAS COLLEGE

This page intentionally left blank.

Resolution

Resolution No. 2019-006

A RESOLUTION ADOPTING THE BUDGET OF SOUTH TEXAS COLLEGE FOR THE FISCAL YEAR BEGINNING SEPTEMBER 1, 2019 AND ENDING AUGUST 31, 2020 IN ACCORDANCE WITH THE PROVISIONS OF THE TEXAS EDUCATION CODE AND ORDERING OTHER PROVISIONS RELATED TO THE SUBJECT MATTER HEREOF.

BE IT ORDERED BY THE BOARD OF TRUSTEES OF SOUTH TEXAS COLLEGE, THAT:

SECTION I: The Budget Estimate of revenues for South Texas College District (the “College District”) and the expenses of conducting the affairs thereof for the ensuing fiscal year beginning September 1, 2019, and ending August 31, 2020, as submitted by the President of the College, be, and the same is in all things, adopted and approved as the budget of all of the current revenues and expenses for the fiscal year beginning the 1st day of September, 2019, and ending the 31st day of August, 2020.

SECTION II: The amount of ad valorem taxes and revenue from other sources, as estimated by the President, is hereby appropriated out of the various Funds for the payment of operating expenses and capital outlay of the College District. A copy of the Budget Summary indicating such revenues and appropriating their expenditures is attached hereto and made a part hereof for all purposes as Exhibit “A” and shall remain on file in the Office of the President.

SECTION III: The sums indicated in Exhibit “A” are hereby appropriated in the Unrestricted Fund and College’s Debt Service Fund out of the current year ad valorem taxes as collected for the purposes of maintenance and operation of the College District, as applicable, and applying the interest due on the general obligation bonds, redeeming the bonds as they mature, and creating sinking funds as required by such bonds.

SECTION IV: All Resolutions or parts of Resolutions in conflict herewith are hereby repealed.

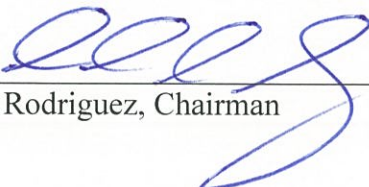
SECTION V: This Resolution shall be and remain in full force and effect as of September 1, 2019.

SECTION VI: If any part, or parts, of this Resolution are found to be invalid or unconstitutional by a court having competent jurisdiction, then such invalidity or unconstitutionality shall not affect the remaining parts hereof and such remaining parts shall remain in full force and effect, and to the extent this Resolution is considered severable.

CONSIDERED, PASSED and APPROVED this 27 day of August, 2019 at a meeting of the Board of Trustees of South Texas College District at which a quorum was present and which was held in accordance with the Texas Government Code Chapter 551.

SIGNED this 27 day of August, 2019.

SOUTH TEXAS COLLEGE DISTRICT

By: 
Paul Rodriguez, Chairman

ATTEST:

By: 
Roy De León, Secretary



SOUTH TEXAS
COLLEGE

